

Weekly Bulletin no.50

Friday 26th January 2024



We've reached the end of another great week at Darnhall. This week our spring **after school clubs** started, we still have spaces left in a few of these clubs. Email contact@darnhall.nhs.uk if your child would like to enquire about a place.

Bumblebee and Spider Class have an exciting library visit coming up in February, please give consent on ParentPay. Reminder: The next instalments for **Paris, Year 4 Llandudno, and Owl Class Petty Pool** are due on **Wednesday 31st January**.



Coming up...

Tuesday 30th January

Story Tent: 2pm-3pm KS2 Hall

Wednesday 31st January

Jo Jingles: 9:00am-9:45am

KS2 Hall

Thursday 1st February

Darnhall Dinkies: 8:45am-10am

KS2 Hall

Adventure Babies: 2pm-3pm

KS2 Hall

Friday 2nd February

Otter Class Parent and Carer

Lunch: 11:40am KS2 Hall

Pop Cats: 2pm-3pm KS2 Hall

School lunches

Next week is Week 1

You can find our menus on the school website under Parent and Carers—School Lunches.

Water bottles

Please ensure all children are bringing a labelled water bottle into school everyday.

Lost Property

All clothing items should be labelled to ensure they are returned.

A big well done to this week's attendance winners

GRASSHOPPER CLASS

Grasshopper class have won this week with **98%** attendance. They have been rewarded with 15 minutes of extra outdoor play.

KS2 Bacon Butty

If you would like to purchase a **Bacon Butty** for your child on Friday break time, please book on ParentPay by Thursday midday, these cost **£1.80**.

Dress to Express Day

for Children's Mental Health Week.

Friday 9th February 2024

Wear your own clothes to school and help raise awareness.

Be who you want to be! Wear what you like to wear!



During Children's Mental Health Week, on **Tuesday 6th February 2024**, all children are invited to take part in Darnhall's **'Bring your bike/scooter to school day'**. **CHILDREN WANTING TO TAKE PART MUST WEAR A HELMET**

During the day, each class will have the opportunity to ride their bike/scooter on the school grounds with their friends. This will be under staff supervision.



Cycling has been demonstrated to boost children's mood by raising endorphin levels, which positively impact their mental health.



Darnhall's Dazzling Debrief by Journalism Club:

Each week journalism club will be writing reports for the weekly bulletin about various topics and upcoming national days.

This week we have been writing reports about topics we are passionate about to introduce ourselves.

This week's pine martin facts:

By A-RS

Habitat:

- . Their habitat is native woodlands.
- . They make nests next to rocks, in hollow trees, or in bird or squirrel's nests.

Fun Facts:

-Once found across Britain, the pine marten population has recovered from little decline, the species is still rare.

-Pine martens aren't confined to woodland, but each animal requires from 86 to 166 hectares of land for its territory.

A link for more pine martin facts:

<https://youtu.be/fsFF976XGz8>



Whales fun facts!

By ZM

- Although you might not like whales you should not be frightened of them!
- The biggest whale in the whole world is a blue whale and they can grow up to 24m, amazing right?
- An orca is a whale that will bite they hunt sea mammals in their pods.
- Most whales have a blue hole which is they use to breath and were they squirt water from.



FUN FACTS ABOUT SHARKS!!!!

By PA

I'm here for shark facts! Some sharks are treacherous, but others can be really friendly!

Fin Facts: MOST FISH HAVE 4 PAIRS OF GILLS BUT SHARKS HAVE 5!



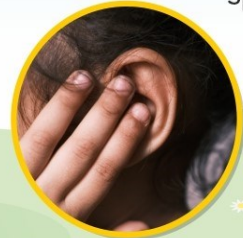
Did You Know?

Dummies can:

- Make it difficult for children to babble or practise sounds - the dummy is in the way!



- Stop the full range of tongue movements that are needed for some speech sounds - this can have long term effects.



- Increase the risk of ear infections.
- Cause a gap between the top and bottom teeth when sucked a lot - this may lead to a lisp.

What can I do to prevent these problems?

- Keep the dummy for sleep times only from 8 months old.
- Remove the dummy when your child is playing or talking.
- When you decide the time is right for your child to stop using a dummy, throw the dummies away to avoid the temptation of giving it back.
- If you need to use a dummy, use it just for a few minutes until your child is settled.
- Reduce dummy use gradually and aim to give it up completely by the time your child is 12 months old.



Remember: The sooner the habit is broken, the easier it will be.

NHS Healthy Start Card



Get help to buy food and milk with the NHS Health Start Scheme.

What is Healthy Start?

If you're more than 10 weeks pregnant or have a child under 4, you may be entitled to get help to buy healthy food and milk.

If you're eligible, you'll be sent a Healthy Start card with money on it that you can use in some UK shops. We'll add your benefit onto this card every 4 weeks.

You can use your card to buy:

- Plain liquid cow's milk
- Fresh, frozen, and tinned fruit and vegetables
- Fresh, dried, and tinned pulses
- Infant formula milk based on cow's milk

You can also use your card to collect:

- Healthy Start vitamins – these support you during pregnancy and breastfeeding
- Vitamin drops for babies and young children – these are suitable from birth to 4 years old

For more information and to see if you qualify go to: www.healthystart.nhs.uk



Support our School!

It's as easy as...



- 1 Join our lottery
- 2 Boost school funds
- 3 Win cash prizes

Tickets cost just £1 a week and are an easy way to help us raise funds for school. There are local cash prizes every week and there's even a chance to win the £25k Jackpot.

To start supporting, visit:

www.yourschoollottery.co.uk/play

and search for: **Darnhall Primary**

Supporters must be 16 years or older



Handle with Care



If your family is experiencing difficulties at home, we would like to provide additional support at school. We understand that you are not always able to share details and that's okay.

If your child is coming to school after a difficult night, morning or weekend, please text **'Handle with Care (and your child's name)'** to Mrs Miranda on **07701 316491**.

Nothing else will be said or asked. This will let us know that your child may need extra time, patience or help during the day.



Baby & Toddler Group Sessions

THE STORY TENT

2:00pm - 3:00pm in KS2 Hall
(one adult per child)

Enjoy songs, music, movement,
physical activity, dance and even
some parachute games!

Session Dates

Tuesday 9th January 2024	Tuesday 5th March 2024
Tuesday 16th January 2024	Tuesday 12th March 2024
Tuesday 23rd January 2024	Tuesday 19th March 2024
Tuesday 30th January 2024	Tuesday 23rd April 2024
Tuesday 6th February 2024	Tuesday 30th April 2024

Story Tent
sessions are **FREE**
NO NEED TO BOOK.



Jo Jingles™

Est. 1995



sessions for parents
and carers with babies and toddlers!

Wednesdays in the **Key**
Stage 2 Hall from
9:00am - 9:45am

Dates for sessions are:

10th January 2024
17th January 2024
24th January 2024
31st January 2024
7th February 2022
14th February 2024
28th February 2024
6th March 2024
13th March 2024
20th March 2024



Sessions are FREE. No need to book

Please note, in the rare event that a class is cancelled, you will be notified via the Darnhall Nursery and Primary School Facebook page.

Parent/Carer Lunch



We would like to invite you along to a special lunch with your child's class. Please refer to the menu for that week for options. Menus are on the website. The cost of the meal will be **£2.80** to be paid on ParentPay.

Class Name	Date of Lunch
Butterfly Class	Friday 13th October 2023
Dragonfly Class	Friday 10th November 2023
Grasshopper Class	Friday 17th November 2023
Centipede Class	Friday 24th November 2023
Bumblebee Class	Friday 5th January 2024
Spider Class	Friday 12th January 2024
Beaver Class	Friday 19th January 2024
Hedgehog Class	Friday 26th January 2024
Otter Class	Friday 2nd February 2024
Rabbit Class	Friday 9th February 2024
Fox Class	Friday 16th February 2024
Squirrel Class	Friday 1st March 2024
Bear Class	Friday 8th March 2024
Badger Class	Friday 15th March 2024
Owl Class	Friday 22nd March 2024

If you cannot attend yourself, grandparents or other family members are of course welcome but due to limited space, only one adult per child will be able to attend. We cannot accommodate any babies or toddlers.

If your child's class is in the Early Years building, then you will have your lunch in this building with them. If your child's class is in the KS2 building, then your lunch will be in the KS2 Hall.

You will need to arrive at school, at the correct building, at 11:40am on the day of the special lunch.



Spring Term 2024 Uniform Time Table



Please note, this rota will start from Wednesday 3rd January 2024.

Class	Mon	Tue	Wed	Thu	Fri
Ladybird Nursery	Uniform	Uniform	Uniform	Forest School	Uniform
Caterpillar Nursery	Uniform	Uniform	Uniform	Uniform	Forest School
Butterfly Class	Uniform	Uniform	Forest School	PE Kit	Uniform
Dragonfly Class	Uniform	Uniform	Forest School	PE Kit	Uniform
Centipede Class	Forest School	PE Kit	PE Kit	Uniform	Uniform
Grasshopper Class	Forest School	Uniform	Uniform	PE Kit	PE Kit
Spider Class	Uniform	PE Kit	Forest School	PE Kit	Uniform
Bumblebee Class	PE Kit	Uniform	Forest School	Uniform	PE Kit
Beaver Class	Uniform	PE Kit	PE Kit	Forest School	Uniform
Hedgehog Class	Uniform	Forest School	Uniform	PE Kit	PE Kit
Otter Class	PE Kit	Uniform	PE Kit	Forest School	Uniform
Rabbit Class	Uniform	Forest School	PE Kit	Uniform	PE Kit
Squirrel Class	PE Kit	PE Kit	Uniform	Uniform	Forest School
Fox Class	Uniform	PE Kit	Uniform	PE Kit	Forest School
Badger Class	Uniform	PE Kit	PE Kit	Uniform	Forest School
Bear Class	PE Kit	Uniform	Uniform	Forest School	PE Kit
Owl Class	PE KIT	Forest School	Uniform	PE Kit	Uniform